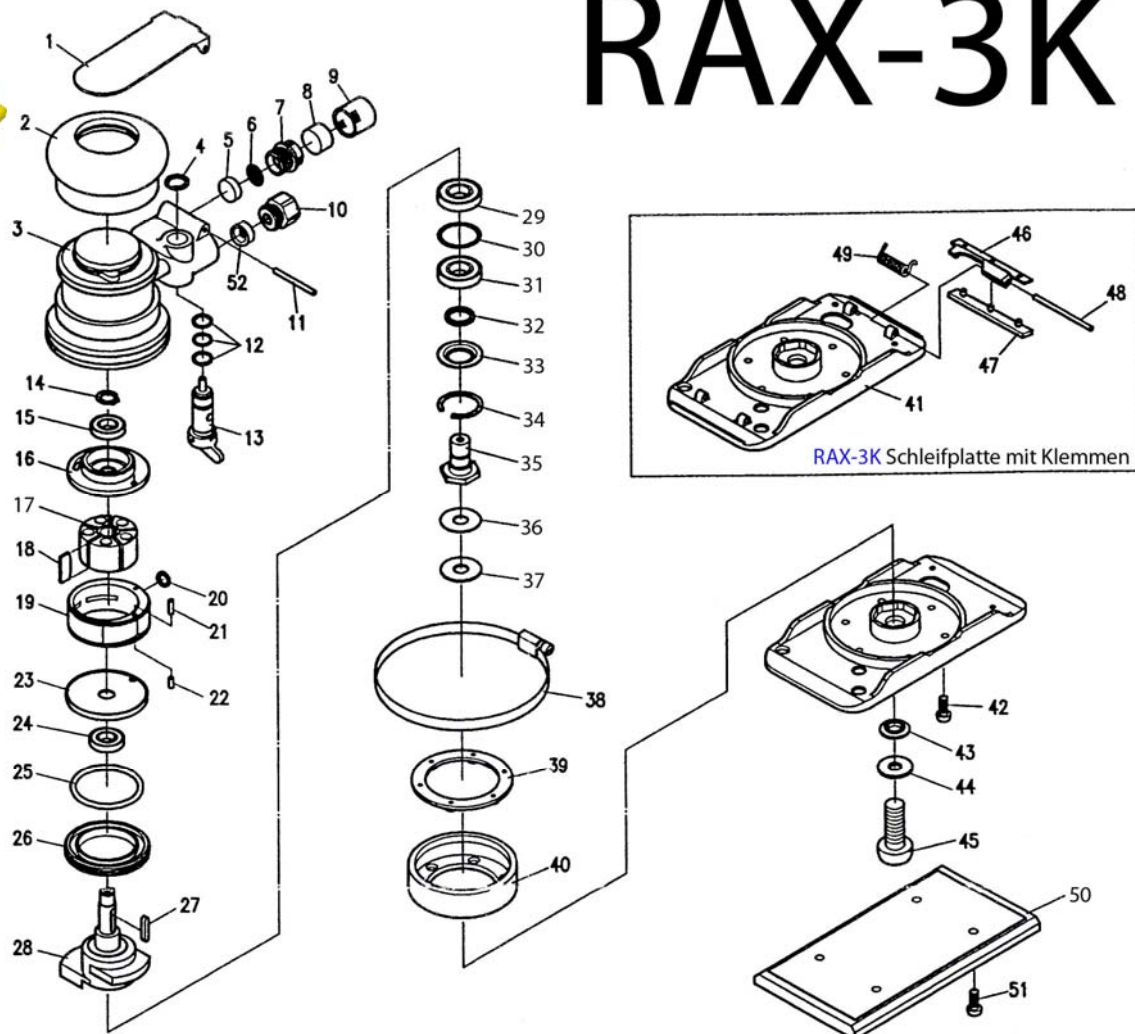


## Explosionszeichnung OK-STEINL-Schwingschleifer / Rutscher



# RAX-3K



Nr.	Art. - Nr.	Teil	VE
1	RL-ET1901	Drücker	1
2	RL-ET1902	Gummi-Griff	1
3	RL-ET1903	Gehäuse	1
4	RL-ET1904	Spreng Ring	1
5	RL-ET1905	Filz	1
6	RL-ET1906	Filzring	1
7	RL-ET1907	Ventil-Körper	1
8	RL-ET1908	Filz	1
9	RL-ET1909	Deckel	1
10	RL-ET1910	Buchse	23Nm 1
11	RL-ET1911	Stift	1
12	RL-ET1912	O-Ring	3
13	RL-ET1913	Geschwindigkeitsregler	1
14	RL-ET1914	Scheibe	1
15	RL-ET1915	Lager	1
16	RL-ET1916	Lagerplatte	1
17	RL-ET1917	Rotor	1
18	RL-ET1918	Lamellen	5
19	RL-ET1919	Zylinder	1
20	RL-ET1920	O-Ring	1
21	RL-ET1921	Stift	1
22	RL-ET1922	Stift	1
23	RL-ET1923	Frontplatte	1
24	RL-ET1924	Lager	1
25	RL-ET1925	O-Ring	1
26	RL-ET1926	Sicherungsring	28Nm 1
27	RL-ET1927	Passfeder zur Rotormitnahme	1
28	RL-ET1928	Exzenter	1

Nr.	Art. - Nr.	Teil	VE
29	RL-ET1929	Lager	1
30	RL-ET1930	Scheibe	1
31	RL-ET1931	Lager	1
32	RL-ET1932	Filzring	1
33	RL-ET1933	Lagerschild	1
34	RL-ET1934	Seegerring	1
35	RL-ET1935	Spindel	1
36	RL-ET1936	Scheibe	1
37	RL-ET1937	Scheibe	1
38	RL-ET1938	Klammer	0,7Nm 1
39	RL-ET1939	Platte	1
40	RL-ET1940	Endplatte	1
41	RL-ET1941	ALU-Grundplatte für Klemmen	1
42	RL-ET1942	Schrauben für Grundplatte	6
43	RL-ET1943	Scheibe	1
44	RL-ET1944	Scheibe	1
45	RL-ET1945	Schraube	11,3Nm 1
46	RL-ET1946	oberer Clip	2
47	RL-ET1947	Gummi-Clip	2
48	RL-ET1948	Stift	2
49	RL-ET1949	Feder	2
50	RL-ET1950	Klett-Schleifplatte 6-Loch + 2	1
51	RL-ET1951	Schrauben (M5 x 6)	2,0Nm 4
52	RL-ET1952	Dichtung	1
10	Loctite Nr. 222		
29 + 31	Loctite Nr. 271		

Den RAX-3K finden Sie im ok-Steinl - Katalog auf der Seite 8.013